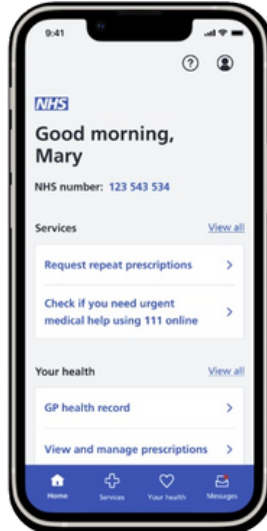


## NHS App information sheet





### 1 What is the NHS App?

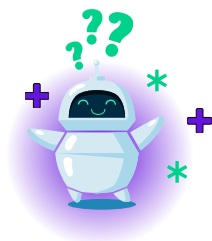
The NHS App is an application available to download on the App store for iPhones and iPads and Google Play store for android phones and tablets. It allows you to access digital health and care services that are available in your area.



**Doug's Top Tip** - For more information on how to download an application from the App store or Google Play store please click [here](#)

The Apple App store logo looks like this: 

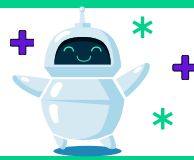
The Google Play Store logo looks like this: 



### 2 Who is it for?

The NHS App is available to anyone aged 13 and over, who is registered with an NHS GP practice in England or the Isle of Man.

It's a safe and simple way to access a range of NHS services on your phone or tablet anytime, anywhere.



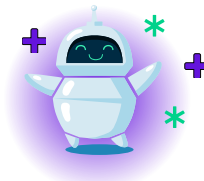
## 3 Why should I use the NHS App?

The NHS App will help you to access the following:



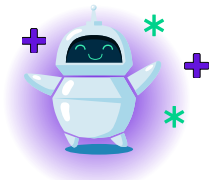
### Get Well

- Find NHS services near you
- Use NHS 111 online
- Book GP appointments
- Manage your hospital appointments
- Contact your GP surgery using an online form



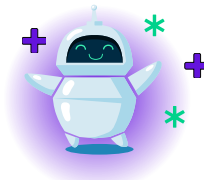
### Stay Well

- View your prescription details
- Order repeat prescriptions and nominate a pharmacy
- Book a COVID or Flu vaccine
- Receive secure messages from your GP or healthcare professional
- Search health conditions via A-Z



### Take Control

- View your health record
- View test results
- View your NHS number
- Register for a GP online
- Make an organ donation decision
- Link accounts to help manage the health care of someone you care for

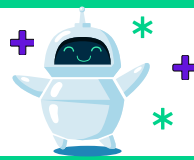


### Protect the NHS

- It saves money by improving access to NHS services, lowering administrative and SMS messaging costs
- It makes it easier for patients to digitally access services, helping patients receive the best care and supporting health care professionals to deliver it



**Doug's Top Tip** - The features available to you depend on what has been authorised by the NHS for your area.



**4** Where would I go for technical support and guidance?

NHS App help and support can be found by clicking Digital Doug below. This can also be accessed by clicking the help button in the top right corner of the NHS App home screen.



**Doug's Top Tip** - If you need further support with the NHS app, check out our YouTube channel and the videos we have on the NHS App [here](#)